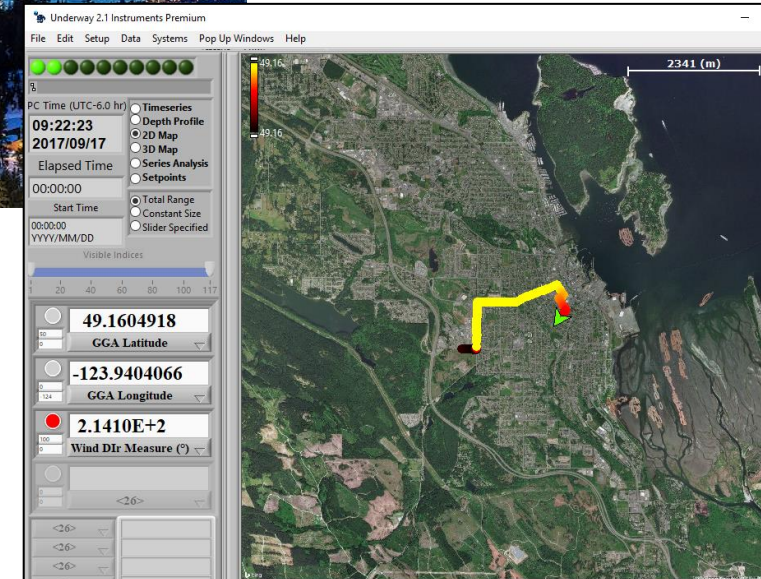
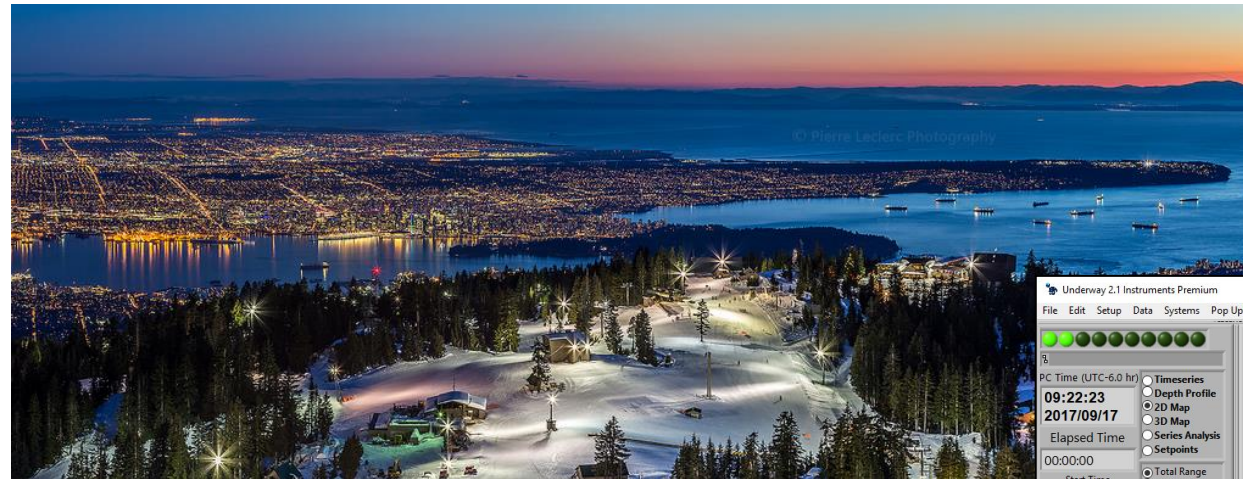
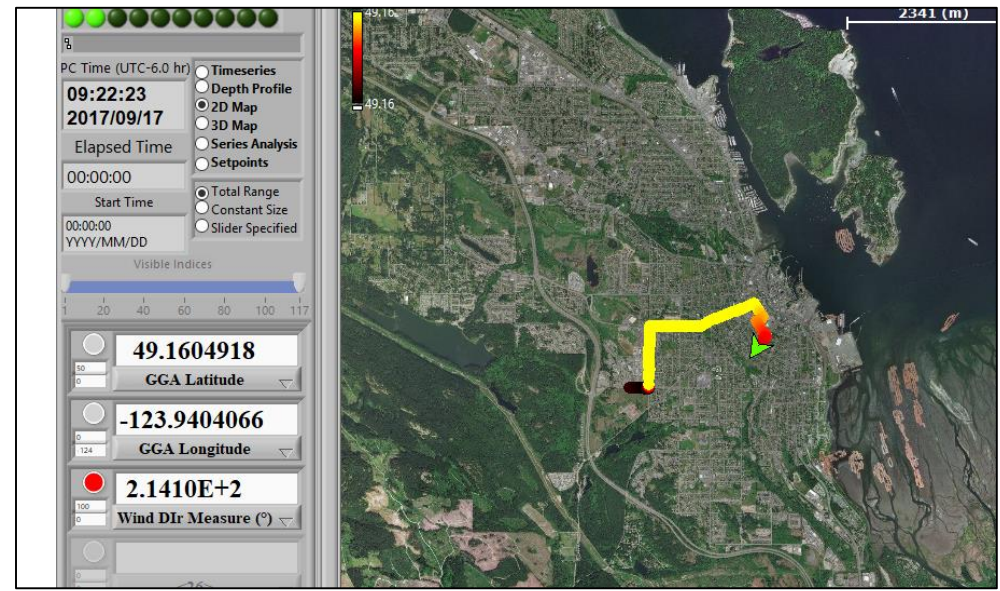
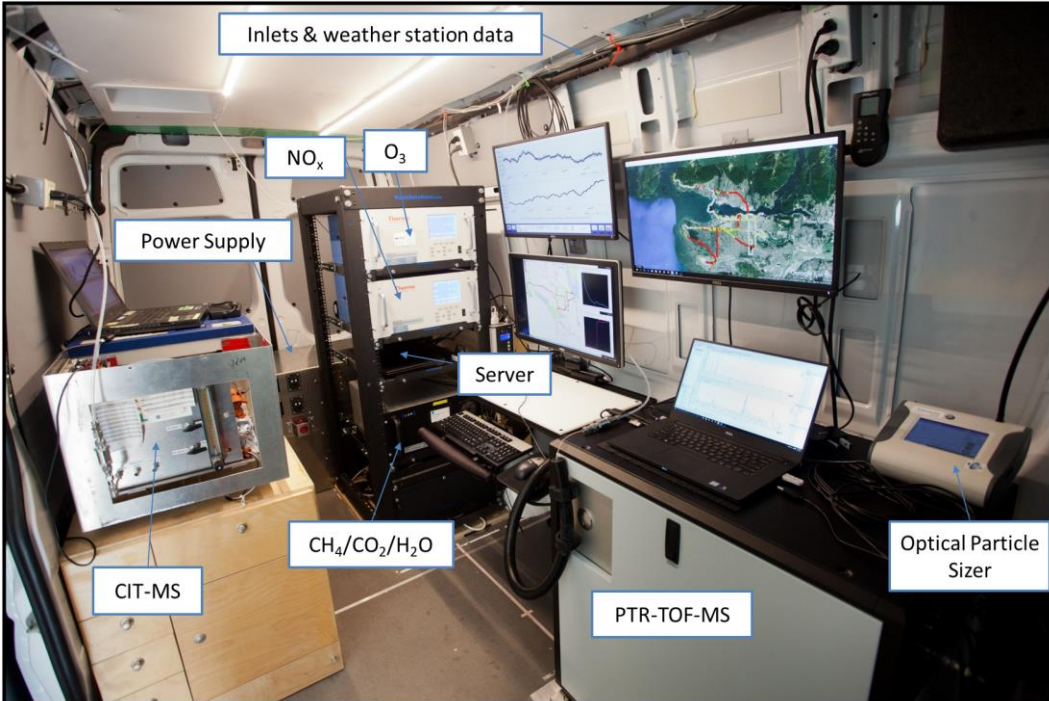


Development of a mobile mass spectrometry laboratory and data management package for comprehensive online chemical analysis and real-time geospatial mapping.

Nicholas G. Davey¹, Larissa Richards^{1,2}, Ryan J. Bell³, Chris G. Gill^{1,2}, Erik T. Krogh^{1,2}

1. Applied Environmental Research Labs, Department of Chemistry, Vancouver Island University, Nanaimo, B.C., Canada 2. Department of Chemistry, University of Victoria, B.C.
3. Beaver Creek Analytical, LLC, Lafayette, CO, USA





PCA Scores Plot

